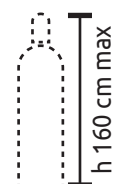
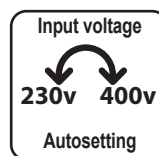


MULTIPROCESS MIG / MAG - MMA - TIG INVERTER 3PH

MODEL 2024



Manutenzione
Maintenance
Carpenteria leggera
Light carpentry
Carpenteria pesante
Heavy carpentry



Ruote industriali
Heavy duty wheels

Multilingua / Multilanguage

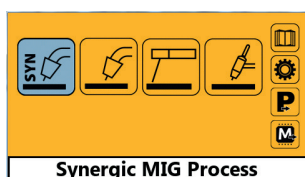


Saldatrice trifase inverter multiprocesso ad alte prestazioni. Ideale per i saldatori che richiedono semplicità nella saldatura avanzata.

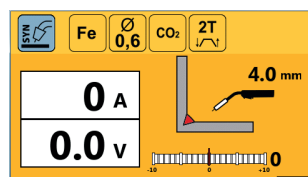
- Saldatura: MIG/MAG, MMA e TIG Lift.
- DC Sinergica. Tutti i parametri principali di saldatura sono collegati e agiscono in maniera combinata.
- Pannello di controllo grafico a colori con due modalità di utilizzo: semplice od avanzata.
- Pacchetto programmi standard di oltre 20 programmi per acciaio dolce, inox alluminio.
- Memoria digitale per salvare le impostazioni di saldatura preferite.
- Aggiornamento software tramite SD-Card.

High-performance multiprocess three-phase inverter welding machine. Ideal for welders who demand simplicity in advanced welding.

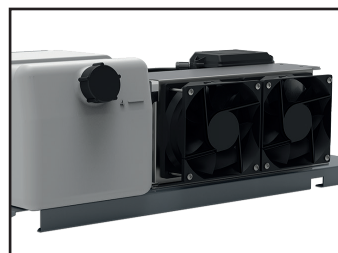
- Welding processes: MIG/MAG, MMA and TIG Lift.
- Synergic DC. All the primary welding parameters are linked and work together.
- Multicolor graphic display with 2 modes: basic or advanced.
- Standard package of 20+ welding programs for mild steel, stainless steel and aluminum.
- Digital memory: to save one's favourite welding settings.
- Software update via SD-Card.



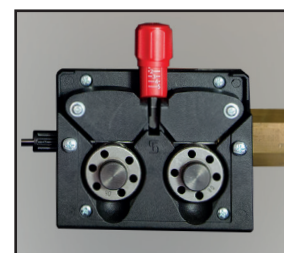
Selezione del processo di saldatura
Selection of the welding process



Cruscotto saldatura MIG sinergica
Synergic MIG welding dashboard





Gruppo raffreddamento integrato (optional)
Integrated water cooling unit (on request)



Trainafile 4 rulli D.37mm
4 rolls wire feeder D.37mm



 MADE IN SAN MARINO				JOB 735 LAB	
Tensione di rete - Input voltage: 50/60Hz		3 ~ 400V +/- 15% (autosetting)	3 ~ 230V +/- 15% (autosetting)		
Potenza assorbita - Absorbed power: 60% / Max		7 / 10 kW	5,5 / 7 kW		
Fusibile - Fuse		16A	16A		
Generatore - Generator: Min		15 kW	10 kW		
Rendimento - Efficiency		> 85%	> 85%		
Campo di regolazione - Welding current		10 - 330A	10 - 260A		
Servizio - Duty cycle (40°C EN 60974-1)		300A - 35% (MMA 250A)	230A - 30% (MMA 200A)		
		250A - 60% (MMA 220A)	200A - 60% (MMA 170A)		
Tensione a vuoto - Open circuit voltage		61V	58V		
Filo ø mm Wires ø mm	Acciaio - Steel Sg2 Sg3	0,6 - 0,8 - 1,0 - 1,2			
	Inox AISI ER308 / ER316 / ER309	0,8 - 1,0			
	Al.Mg 5	0,8 - 1,0 - 1,2			
	Al.Si 5	1,0 - 1,2			
	Cu.Si 3 / Cu.Al 8	0,8 - 1,0 - 1,2			
	Filo animato - Flux cored	1,2			
Riporti - Hard facing		1,2			
Bobina Ø mm - Wire spool Ø mm		200 - 300			
MMA Elettrodi - Electrodes: ø mm		1,6 - 5,0			
Trainafile - Wire feeder: Peso - Weight ≈		22 kg			
Trainafile - Wire feeder: Dimensioni - Size		617 x 320 x 562 mm			
Generatore - Power source: Peso - Weight ≈		50 kg			
Generatore - Power source: Dimensioni - Size		986 x 556 x 992 mm			

Caratteristiche

- Display grafico multicolore.
- Lettore SD Card.
- Trainafile 4 rulli.

Funzioni MIG**Saldatura sinergica.**

- Memorizzazione jobs utente.
- Pre gas, Post gas regolabili.
- Velocità avvicinamento filo.
- Hot Start: Regolabile.
- Slope up & down regolabili.
- Induttanza elettronica regolabile.
- Crater filler.
- Passata di radice.
- Burn back: Regolabile.
- Funzioni pulsante torcia: 2/4T / Spot / Stitch.
- Caricamento filo.
- Test gas.

Funzioni MMA

- Hot Start regolabile.
- Arc Force regolabile.
- Anti-sticking.

Funzioni TIG

- TIG con innesco LIFT (Torcia con rubinetto).
- Anti-sticking.
- Slope down regolabile.

Predisposizioni:

- Raffreddamento torcia integrato
- Torcia con potenziometro.
- Torcia Push Pull.
- Comando a distanza.

Features

- Multicolor graphic display.
- SD Card reader.
- 4 Rolls wire feeder.

MIG Features**Synergic welding.**

- User jobs saving.
- Adjustable Pre gas, Post gas.
- Wire approach speed.
- Adjustable Hot Start.
- Adjustable Slope up & down.
- Adjustable electronic inductance.
- Crater filler.
- Root pass.
- Adjustable Burn back.
- Torch trigger mode: 2/4T / Spot / Stitch.
- Wire loading.
- Gas test.

MMA Features

- Adjustable Hot Start.
- Adjustable Arc Force.
- Anti-sticking.

TIG Features

- TIG with LIFT arc striking (Torch with gas valve).
- Anti-sticking.
- Adjustable Slope down.

Arranged for:

- Integrated torch cooling
- Potentiometer torch.
- Push Pull Torch.
- Remote control.

Accessori in dotazione - Supplied accessories:



										
KIT JOB 735 LAB: (264100 + 264200 + 1,5m AIR)	264100	264200	1,5m AIR	-	4,0m AIR 011321	9,0m AIR 011322	EP 36 - 3m 330A @ 60	010578	EP 36 - 4m 330A @ 60	010579
KIT JOB 735 LAB H2O READY: (264100 + 264200 + 1,5m H2O + 010602)	264100	264200	1,5m H2O	(011174)	4,0m H2O 011326	9,0m H2O 011327	EP 500A H2O - 3m 500A @ 100	010580	EP 500A H2O - 4m 500A @ 100	010581